

# MONTHLY MEMBERSHIP PROGRESS REPORT

LOCATION INDIA

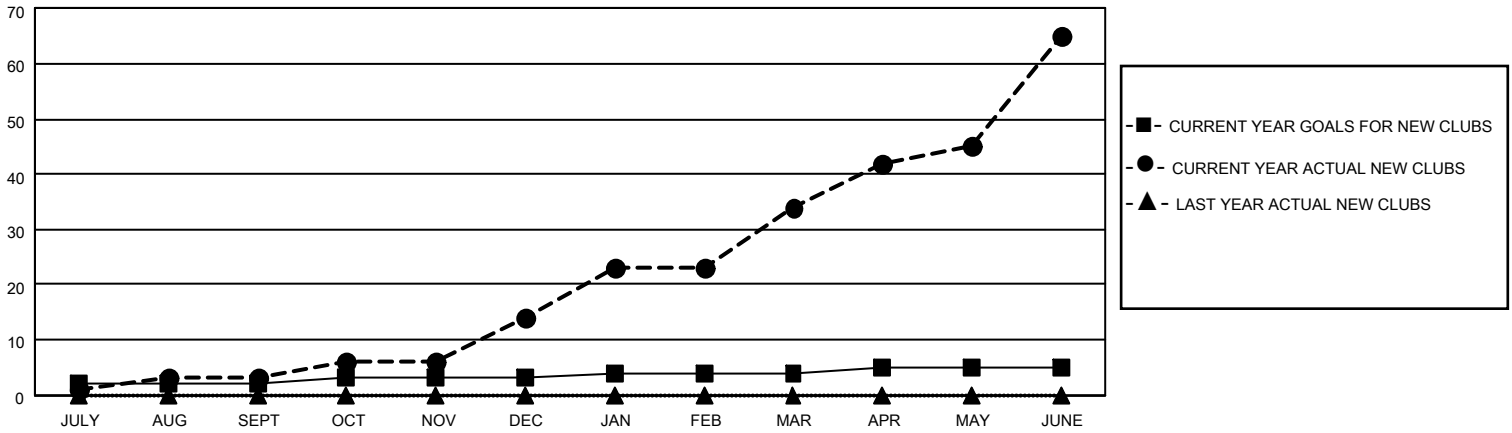
District 3232F1

Results as of: 6/30/2021

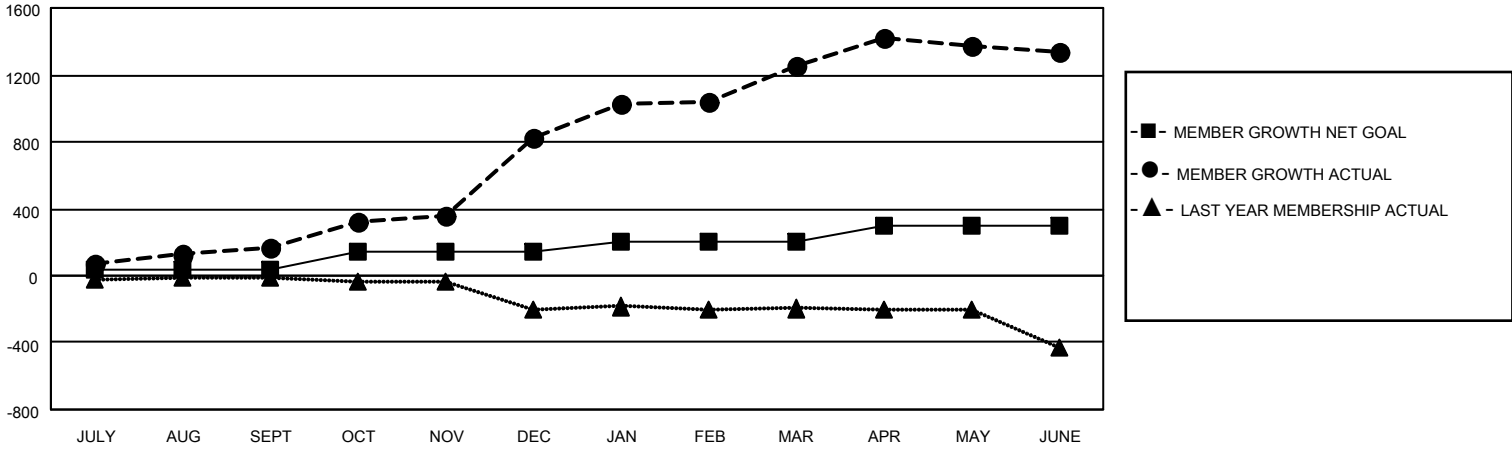
Clubs			
RESULTS FOR 2020-2021			
QUARTER	NEW CLUB GOAL	NEW CLUBS	DROPPED CLUBS
JULY/AUG/SEPT	2	3	1
OCT/NOV/DEC	1	11	0
JAN/FEB/MAR	1	20	0
APR/MAY/JUNE	1	31	0

Members			
RESULTS FOR 2020-2021			
QUARTER	MEMBER GROWTH NET GOAL	MEMBER GROWTH ACTUAL	DROPPED MEMBERS ACTUAL (including transfers)
JULY/AUG/SEPT	40	189	17
OCT/NOV/DEC	100	743	70
JAN/FEB/MAR	60	465	31
APR/MAY/JUNE	100	684	581

**GOALS AND ACTUAL NEW CLUBS CUMULATIVE**



**GOALS AND ACTUAL MEMBERS CUMULATIVE**



**DROPPED CLUBS: 1**

120 CLUBS OF 139 ADDED 1 OR MORE NEW MEMBERS

**GENDER DISTRIBUTION**

MALE 2,625 (62.69%)  
 FEMALE 1,562 (37.31%)

**DROPPED MEMBERS**

[CLICK HERE FOR CUMULATIVE MEMBERSHIP DATA](#)

DECEASED	31
CLUB CANCELLED	0
OTHER	668
<b>TOTAL</b>	<b>699</b>

TOTAL FAMILY UNIT MEMBERS	2,722
FAMILY MEMBERS PAYING HALF DUES	1,741